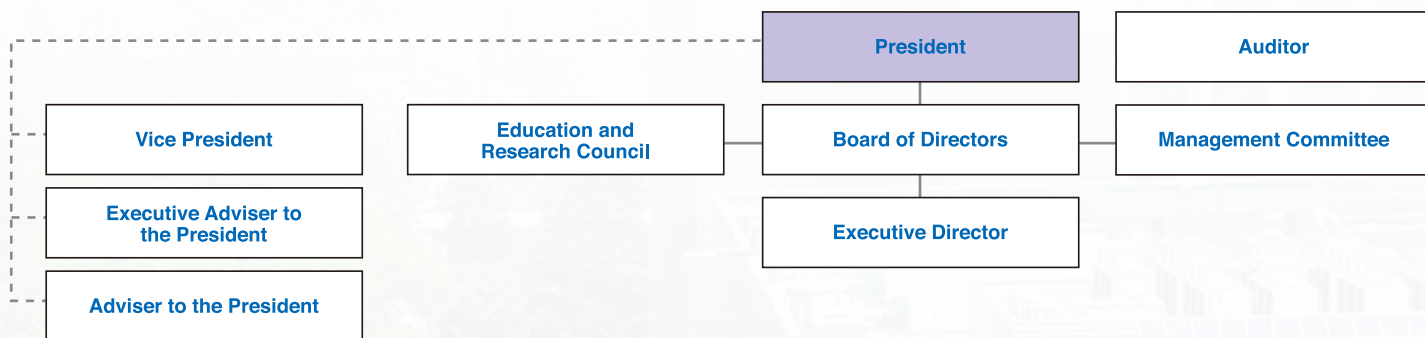


OUTLINE
UNIVERSITY OF TOYAMA



Organization



Philosophy and Mission

Philosophy

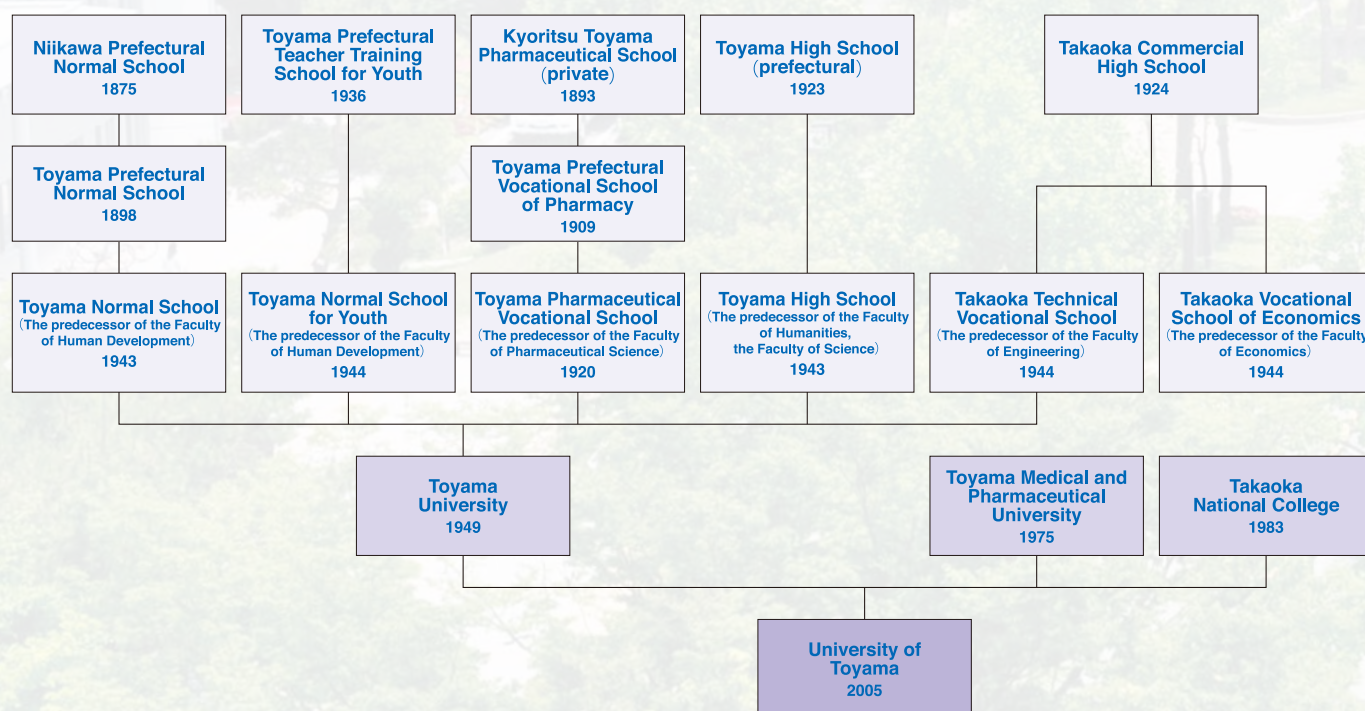
The University of Toyama will uphold a global standard of education and research integrated with life sciences, natural sciences and arts, and social sciences open to the regional community and to the world.

The university will nurture our students with a strong sense of mission and creativity based on the respect for human dignity. We will make contributions to the local, regional and international community, and will promote the harmonious development of science, art and culture, society and the natural environment.

Mission

- I. Education: training students to be creative and to have a strong sense of mission
- II. Research: sharing advanced research with the region and the world
- III. Social contribution: contributing to the region and the international community
- IV. Operations: university management with a high degree of transparency

History



Gofuku Campus



Sugitani Campus



Takaoka Campus

Student Enrollment

One of the best comprehensive universities with wonderful students from all over the country

Faculties

Faculties	Departments		Admission Capacity	Capacity
Humanities	Humanities		170	725
	Total		170 (7)※	739
Human Development	Educational Sciences		80	320
	Environment and Humanity		90	360
	Total		170	680
Economics	Day Courses	Economics	120	525
		Business Administration	100	445
		Business Law	85	370
		Sub Total	305 (10)※	1,360
	Evening Courses	Economics	10	70
		Business Administration	10	70
		Business Law	10	70
		Sub Total	30	210
	Total		335 (10)※	1,570
Science	Mathematics		50	200
	Physics		40	160
	Chemistry		35	140
	Biology		35	140
	Earth Science		—	120
	Environmental Biology and Chemistry		30	120
	Total		190 (4)※	888
Medicine	Medicine		105 (5)☆	655
	Nursing		80 (10)※	340
	Total		185 (5)☆ (10)※	995
Pharmacy and Pharmaceutical Sciences	Pharmacy		55	330
	Pharmaceuital Sciences		50	200
	Total		105	530
Engineering	Electric and Electronic Engineering		—	264
	Intellectual Information Engineering		—	216
	Mechanical and Intellectual Systems Engineering		—	270
	Life Sciences and Bioengineering		—	156
	Environmental Applied Chemistry		—	156
	Materials Science and Engineering		—	153
	Engineering		365	365
	Total		365 (20)※	1,620
Art and Design	Art and Design		110	455
	Total		110	455
Sustainable Design	Earth System Science		40	40
	Civil Design and Engineering		40	40
	Materials Design and Engineering		60	60
	Total		140	140
	Grand Total		1,770 (5)☆ (10)※	7,617

The numbers in ※ indicate the capacity of new third-year transfer students(not included in the total). The numbers in ☆ indicate the capacity of new second-year transfer students in the Department of Medicine(not included in the total).

Graduate Schools

Graduate Schools	Programs	Majors	Admission Capacity	Capacity
Humanities	Master's Program	Humanities	8	16
		Total	8	16
Human Development	Master's Program	Educational Sciences	6	12
		Development and Environment	6	12
		Total	12	24
Economics	Master's Program	Regional and Economic Policy	6	12
		Business Administration	12	24
		Total	18	36
Art and Design	Master's Program	Art and Design	8	16
		Total	8	16
Innovative Life Science	Ph.D. Program	Cognitive and Emotional Neuroscience	9	36
		Biological Information Systems	4	12
		Advanced Nanosciences and Biosciences	4	12
		Total	17	60
Medicine and Pharmaceutical Sciences for Education	Master's Program	Medical Science	15	30
		Nursing	—	—
		Sub Total	15	30
	Master's Program	Nursing	16	32
		Pharmaceutical Basic Sciences	35	70
		Sub Total	51	102
	Ph.D. Program	Nursing	3	9
		Pharmaceutical Basic Sciences	8	24
		Sub Total	11	33
	Ph.D. Program	Medical Life Science	18	72
		Integrative Oriental and Western Medical Sciences	7	28
		Pharmacy	4	16
		Pharmaceutical Life Science	—	—
		Sub Total	29	116
		Total	106	281
Science and Engineering for Education	Master's Program	Mathematics	8	16
		Physics	12	24
		Chemistry	12	24
		Biology	12	24
		Earth Sciences	10	20
		Environmental Biology and Chemistry	10	20
		Electric and Electronic Engineering	33	66
		Intellectual Information Engineering	27	54
		Mechanical and Intellectual Systems Engineering	33	66
		Life Sciences and Bioengineering	18	36
		Environmental Applied Chemistry	22	44
		Materials Science and Engineering	20	40
	Sub Total	217	434	
	Ph.D. Program	Advanced Mathematics and Human Mechanisms	5	15
		Nano and Functional Material Sciences	4	12
		New Energy Science	3	9
		Earth, Life and Environmental Sciences	4	12
		Sub Total	16	48
		Total	233	482
Teacher Training Development	Professional Degree Program	Teacher Training Development	14	28
		Total	14	28
Grand Total			416	943

International Student

The number of international students accepted is 307 from 24 countries / regions. (as of May 1, 2018)

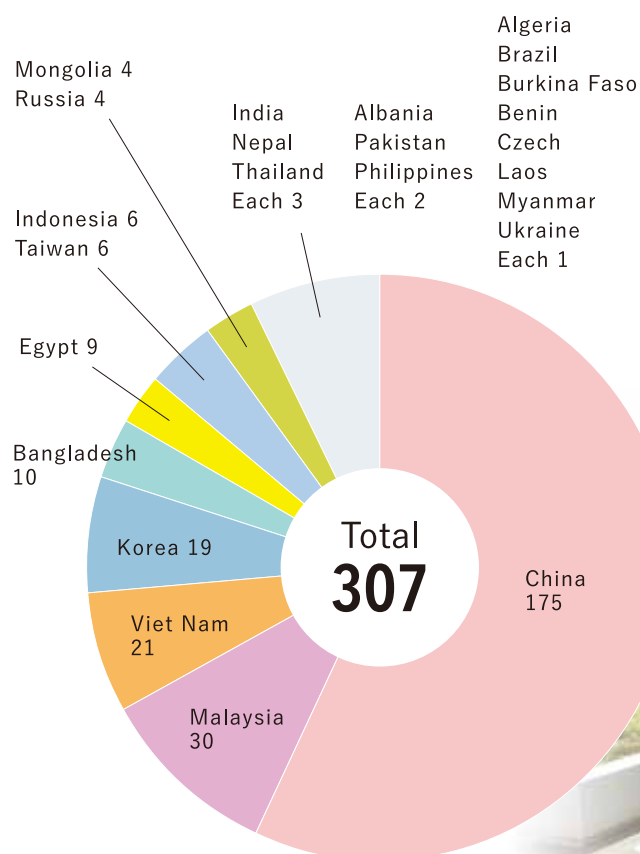
We offer various programs to understand other cultures and acquire a global sense such as studying abroad, language trainings, and practical trainings for diverse cultures.

The number of Japanese students who participate in studying abroad and other international activities is 430.

(in the 2017 academic year)

International Students (as of May 1, 2018)

Faculties	Faculty of Humanities	25
	Faculty of Human Development	6
	Faculty of Economics	20
	Faculty of Science	3
	Faculty of Medicine	1
	Faculty of Pharmacy and Pharmaceutical Sciences	0
	Faculty of Engineering	45
	Faculty of Art and Design	4
	Faculty of Sustainable Design	2
	Sub Total	106
Graduate School's Master's Programs	Graduate School of Humanities	7
	Graduate School of Human Development	2
	Graduate School of Economics	40
	Graduate School of Medicine and Pharmaceutical Sciences for Education	20
	Graduate School of Science and Engineering for Education	41
	Graduate School of Art and Design	4
	Sub Total	114
Graduate School's Ph.D. Programs	Graduate School of Medicine and Pharmaceutical Sciences for Education	31
	Graduate School of Innovative Life Science	19
	Graduate School of Science and Engineering for Education	35
	Sub Total	85
Organization for International Education and Exchange		1
Insitute of Natural Medicine		1
Total		307



International Exchange

■ University Exchange Relationships (U-level)
■ Faculty Exchange Relationships (F-level)
■ International Cooperative Centers (ICC)

37 agreements with 37 universities / institutions in 16 countries / regions
94 agreements with 94 universities / institutions in 26 countries / regions
4 universities / institutions in 3 countries

Total 132 universities / institutions in 30 countries / regions (as of October 31, 2018)

EUROPE

U-level 9			
Switzerland	University of Basel	Finland	Lahti University of Applied Sciences
Slovakia	University of Zilina	France	University of Orleans
	Technical University of Kosice	Poland	AGH University of Science and Technology
Norway	UiT The Arctic University of Norway	Russia	Far Eastern Federal University
			Novosibirsk State University
F-level 23			
Faculty of Humanities	Russia	Moscow State Linguistic University	
Faculty of Human Development	Netherlands	Faculty of Humanities, Leiden University	
	Spain	Faculty of Teacher Training and Education, University Autonomous of Madrid	
	Russia	Maritime State University named after admiral G.I.Nevelskoi	
Faculty of Medicine	U.K.	The International Centre for Health and Society, University College London	
Faculty of Engineering	Czech	Institute of Scientific Instruments, Academy of Sciences of the Czech Republic	
	Russia	The Institute of Automation and Control Processes, Far Eastern Branch of the Russian Academy of Sciences	
Faculty of Art and Design	Sweden	Capellagarden School of Craft and Design	
	Czech	Academy of Arts, Architecture and Design in Prague	
Graduate School of Medicine and Pharmaceutical Sciences for Research	Ireland	Trinity College Dublin, the University of Dublin, School of Pharmacy and Pharmaceutical Sciences	
	Germany	Heart and Diabetes Center NRW, Clinic for Thoracic and Cardiovascular Surgery, Faculty of Medicine, Ruhr University Bochum	
Graduate School of Science and Engineering for Research	Albania	Faculty of Mechanical Engineering, Polytechnic University of Tirana	
	Norway	Faculty of Natural Sciences and Technology, Norwegian University of Science and Technology	
	Poland	Institute of Metallurgy and Materials Science, Polish Academy of Sciences	
		Faculty of Electronics and Information Technology, Warsaw University of Technology	
Center for Far Eastern Studies	Russia	Faculty of Environmental Engineering, Wroclaw University of Science and Technology	
		Institute of Economics and Industrial Engineering, Siberian Branch, Russian Academy of Sciences	
		Katanov State University of Khakassia	
		Economic Research Institute, Far Eastern Branch, Russian Academy of Sciences	
		Center of Social Demography and Economic Sociology, Institute of Socio-Political Research, Russian Academy of Sciences	
Hydrogen Isotope Research Center	Russia	Far East State Agricultural University	
		Far Eastern Branch of Russian Academy of Sciences, Institute of Geology and Nature Management	
		Bonch-Bruyevich St. Petersburg State University of Telecommunications	
Total 32 Universities / institutions			

NORTH AMERICA

U-level 3		
U.S.A.	Murray State University	
	University of Hawai'i Maui College	
	College of Charleston	
F-level 4		
Faculty of Engineering	U.S.A.	School of Engineering and Applied Science, University of Virginia
Graduate School of Medicine and Pharmaceutical Sciences for Research	U.S.A.	School of Pharmacy, University of Southern California
		John A. Burns School of Medicine, University of Hawai'i at Manoa
	Canada	Faculty of Medicine & Dentistry, University of Alberta
Total 7 Universities / Institutions		

LATIN AMERICA

F-level 1		
Graduate School of Medicine and Pharmaceutical Sciences for Research	Brazil	Institute of Biological Sciences, University of Brasilia
Total 1 University / institution		

OCEANIA

F-level 1		
Graduate School of Science and Engineering for Research	Australia	School of Physical, Environmental & Mathematical Sciences, University of New South Wales, Canberra Campus at Australian Defence Force Academy
Total 1 University / institution		

AFRICA

U-level 1		
Egypt	Assiut University	
F-level 1		
Institute of Natural Medicine	Egypt	Faculty of Pharmacy, Cairo University
ICC 1		
International Cooperative Center Office: FACULTY OF PHARMACY, CAIRO UNIVERSITY-INSTITUTE OF NATURAL MEDICINE, UNIVERSITY OF TOYAMA		
Total 2 Universities / Institutions		

ASIA

U-level 24		F-level 64		U-level 24		F-level 64		U-level 24		F-level 64	
Indonesia	Hasanuddin University	Faculty of Humanities	China	School of Foreign Languages, Jiamusi University	Graduate School of Medicine and Pharmaceutical Sciences for Research	Korea	College of Medicine, Chungnam National University	Center for Far Eastern Studies	School of Pharmacy, Guangxi University of Chinese Medicine		
Korea	Daegu University		Viet Nam	University of Languages and International Studies, Vietnam National University, Hanoi		Viet Nam	National Institute of Medicinal Materials				
	Kookmin University			Institute of Sino-Nom Studies, Vietnam Academy of Social Sciences			Hue University of Medicine and Pharmacy				
	Kangwon National University		Faculty of Human Development	Indonesia		Faculty of Letter and Culture, Udayana University	China		Chongqing Medical University	Myanmar	Faculty of Traditional Medicine, University of Medicine and Pharmacy at Ho Chi Minh City
	Kyungpook National University					Faculty of Humanities, Bina Nusantara University			Hebei Medical University		College of Natural Sciences, Can Tho University
Thailand	Chulalongkorn University	Faculty of Human Development Attached Elementary School	Thailand	Faculty of Education, Khon kaen University	Graduate School of Science and Engineering for Research	Viet Nam	Hanoi Medical University	Mongolia	Department of Chemistry, University of Yangon		
	Mahidol University		Korea	Kyung Hee University affiliated Elementary School		Malaysia	Department of Pharmacy, Faculty of Medicine, University of Malaya		China	Department of Traditional Medicine, Ministry of Health and Sports	
	Chiang Mai University		China	The primary school affiliated to Dalian Maritime University		Mongolia	Mongolian National University of Medical Sciences			School of Biology and Biotechnology, National University of Mongolia	
Taiwan	National Chengchi University	Faculty of Human Development Attached Junior High School	China	Fuxin Experimental Middle School		Indonesia	Faculty of Agriculture, University of Palangka Raya			Northeast Asian Studies Academy, Jilin University	
	Ming Chuan University		Faculty of Economics	Korea		School of Business and Graduate School of Management, Pusan National University	China		College of Science, China University of Petroleum, Beijing		College of Economics and Management, China Agricultural University
	National Central University				College of Economics & Business Administration, Kyonggi University		Department of Physics, Changji University of Xinjiang		Qianyanzhou Experiment Station, Institute of Geographic Sciences and Natural Resources Research, Chinese Academy of Sciences		
China	Liaoning University			College of Humanities and Social Sciences, Kyonggi University	Institute of Natural Medicine	Bangladesh	Faculty of Mathematical and Physical Sciences, Jahangirnagar University		School of Economics and Management, Jilin Agricultural University		
	Shenyang Pharmaceutical University		Taiwan	School of Commerce, Kainan University			Rajshahi University of Engineering and Technology	Hydrogen Isotope Research Center	China	China Center for Economic Studies, Fudan University	
	China-Japan Friendship Hospital			School of Humanities and Social Sciences, Kainan University		Malaysia	Faculty of Mechanical Engineering, Universiti Teknologi MARA		Korea	Research Academy of Economic and Social Development, Dongbei University of Finance and Economics	
	Peking University Health Science Center		China	School of Public Administration, Renmin University of China			Jeffrey Cheah School of Medicine and Health Sciences, Monash University		The Research Station of Changbai Mountain Forest Ecosystem, Chinese Academy of Sciences		
	Dalian University of Technology			School of Transportation and Logistics, Southwest Jiaotong University			Faculty of Electrical and Electronic Engineering, Universiti Tun Hussein Onn Malaysia		ITER Korea, National Fusion Research Institute		
	Lanzhou University			College of Economics, Central South University of Forestry and Technology	Korea	Natural Products Research Institute, College of Pharmacy, Seoul National University	ICC 3	International Cooperative Center on Natural Medicine: THE FACULTY OF PHARMACEUTICAL SCIENCES, CHULALONGKORN UNIVERSITY-UNIVERSITY OF TOYAMA			
	Inner Mongolia Medical University			Institute of Japanese Studies, Nankai University				Hospital of Oriental Medicine, Kyung Hee University	International Cooperative Center for Researches on Medicinal Resources: PEKING UNIVERSITY HEALTH SCIENCE CENTER-INSTITUTE OF NATURAL MEDICINE, UNIVERSITY OF TOYAMA		
	Shandong University			College of Economics and Management, Inner Mongolia University				Korea Institute of Oriental Medicine	International Cooperative Center: SCHOOL OF PHARMACY, NAJING UNIVERSITY OF TRADITIONAL CHINESE MEDICINE-INSTITUTE OF NATURAL MEDICINE, UNIVERSITY OF TOYAMA		
	Shanghai University			College of Business, Central South University of Forestry and Technology		Thailand		Faculty of Pharmacy, Silpakorn University	International Cooperative Center: SCHOOL OF PHARMACY, NAJING UNIVERSITY OF TRADITIONAL CHINESE MEDICINE-INSTITUTE OF NATURAL MEDICINE, UNIVERSITY OF TOYAMA		
	Northeastern University	Faculty of Engineering	China	Dalian Jiaotong University				Faculty of Pharmaceutical Sciences, Khon Kaen University			
Viet Nam	Military Medical University			Traction Power State Key Laboratory of Southwest Jiaotong University		Faculty of Pharmaceutical Sciences, Ubon Ratchathani University					
	Hanoi University of Science and Technology	Faculty of Art and Design	Thailand	Bunditpatanasilpa Institute	Taiwan	College of Life Sciences, National Chiayi University					
Malaysia	University Tunku Abdul Rahman				China	School of Pharmacy, Nanjing University of Traditional Chinese Medicine					
Total 89 Universities / institutions											

Location Map

Access to Toyama

From Tokyo

About 1 hr from Tokyo International Airport(Haneda Airport) by Air
About 2 hrs 10 min from JR Tokyo Station by Shinkansen

From Osaka

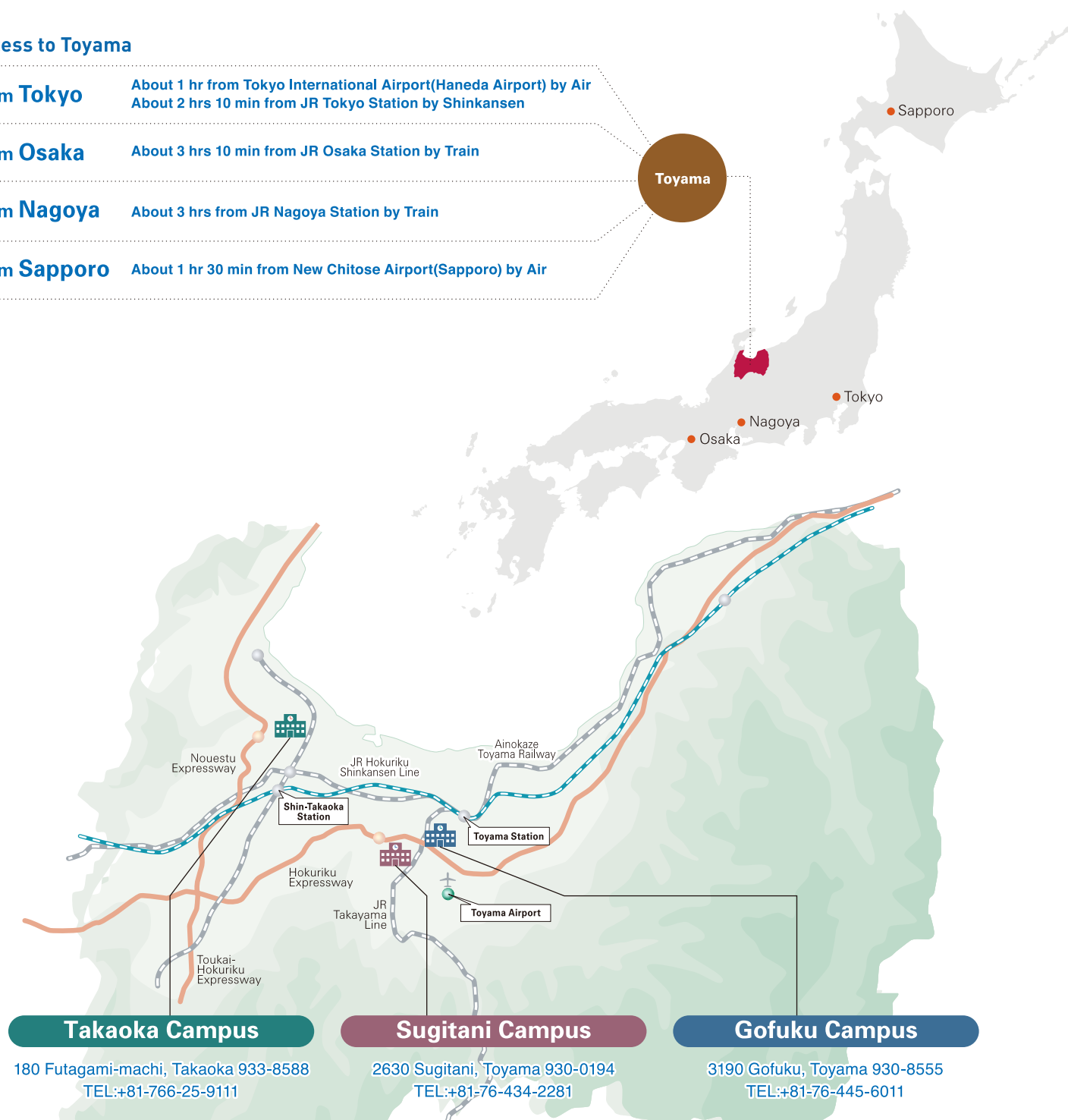
About 3 hrs 10 min from JR Osaka Station by Train

From Nagoya

About 3 hrs from JR Nagoya Station by Train

From Sapporo

About 1 hr 30 min from New Chitose Airport(Sapporo) by Air



Takaoka Campus

180 Futagami-machi, Takaoka 933-8588
TEL:+81-766-25-9111

Sugitani Campus

2630 Sugitani, Toyama 930-0194
TEL:+81-76-434-2281

Gofuku Campus

3190 Gofuku, Toyama 930-8555
TEL:+81-76-445-6011

